

## Attention:

- ◆ This appliance can be used by children aged from 8 years and above and persons with reduced physical, sensory or mental capabilities or lack of experience and knowledge if they have been given supervision or instruction concerning use of the appliance in a safe way and understand the hazards involved. Children shall not play with the appliance. Cleaning and user maintenance shall not be made by children without supervision.
- ◆ If the supply cord is damaged, it must be replaced by the manufacturer, its service agent or similarly qualified persons in order to avoid a hazard.



coolbreeze  
RENTALS P/L

# B-C02 Smart air purifier

Health series · Commercial Use

Thank you for use this product which protected by intellectual property.

Please read this instruction manual carefully  
before use and keep it for future use.



If the parameter, specification and other information maybe changed, we will not notice specially, please refer to the actual machine.

The "optional" are optional functions, please kindly check with the retailer if your machine with these functions.

## Smart air purifier

Health series · Commercial Use

# Make an ecotypic home to avoid viruses

### Environment self cicatrization

produces "air vitamin"

- It can generate 8,000,000 "air vitamin" every second which can improve the home environment.

### Anti bacteria

Restrain the breeding and activity of viruses

- UV light can efficiently kill bacteria and inhibit its activation

### Healthy air

Healthy air is the basis of health and life

- A child needs 400KG of air everyday, equal to 100 times of an adult needs water per day. So it is very important to the health to improve the air environment of live.

## DIRECTORY INDEX

CAUTIONS ----- 1-3

WARNING ----- 2

ATTENTION ----- 3

PRODUCT PERFORMANCE  
AND TECHNICAL FEATURES ----- 4

Product performance ----- 4

Technical features ----- 4

COMPONENT INTRODUCTION ----- 5-6

Diagram of the outlook ----- 5

Diagram of unit ----- 5

Operating parts ----- 6

CAUTIONS BEFORE OPERATING ----- 7-8

How to touch the control panel ----- 7

Disassembling front cover ----- 7

Installation of the filters ----- 8

Power supply ----- 8

Placement ----- 8

OPERATING INSTRUCTION ----- 9-12

Power setting ----- 9

Function setting ----- 9

Timer setting ----- 10

Fan speed setting ----- 10

Smart setting ----- 11

Reset setting ----- 12

Refresh setting ----- 12

MAINTENANCE AND  
CLEANING INSTRUCTION ----- 13-14

Maintenance and cleaning instruction ----- 13

Methods for replacing UV lamp ----- 13

Disassembly and installation for UV lamp ----- 14

FAQ ----- 15

TECHNICAL PARAMETERS ----- 16

Parameters of the unit ----- 16


Filter parameters ----- 16


UV parameters ----- 16

## CAUTIONS

In order to prevent harm or damage happened to users or others, be sure to comply with the requirement as below:

### Warning/Attention

 **Warning** It reminds that misusing or mishandling may cause death.

 **Attention** It reminds that misusing or mishandling may cause hurt.



FORBID



FORCE

### Kindly attention:

If the power wire is broken, to prevent danger happen, please send it to agent, after-sales service or technical person for repair.

## CAUTIONS

### WARNING

Please supervise your children and avoid them from touching or using machine.



**Do not connect or disconnect the power with wet hand**  
It may cause electrical shocking.



AVOID WET

**No disassembly, repair and reconstruction.**  
It may cause fire or damage.

Please send it to the retailer for repair.



NO DISASSEMBLE

**Do not use the over run socket or wiring connector. Do use the rated voltage.**

It may cause fire



FORBID

**Do plug the power into the socket completely.**

It may cause fire because of heating or electrical shocking.  
Do not use the damaged plug or loose socket



**Avoid any water on the surface of the unit.**

It may cause short circuit or electrical shocking.



AVOID WET

**The appliance must be disconnected from the supply mains before cleaning or other maintenance**

Otherwise the unit may start working in a sudden which may cause electrical shocking or hurt.



DISCONNECT POWER

**Do not insert any metal objects into the unit.**

It may cause hurt or electric shocking



FORBID

**Do not repair it when the cord or plug is damaged.**

It may cause short circuit, electric shocking or fire.  
Please send it to the retailer for repair.



FORBID

**If there is dust on the plug, it may weaken the insulation, even cause fire**

Take out the plug and clean it with dry cloth.  
Please remove the plug from the socket if not using for a long period.



Do clean the plug termly

## ATTENTION

### ⚠ ATTENTION

#### Do not power the unit on when using insecticide in the room

Otherwise the insecticide may be stored in the unit and will blow out during the normal working time. It is harmful to the health.

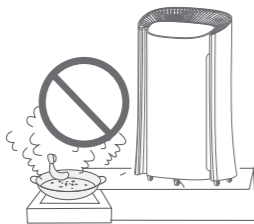
Please ventilate completely after having used the insecticide before turn on the unit.



FORBID

#### Do not use in the room with lampblack such as kitchen.

It may cause hurt because the machine is not a ventilator



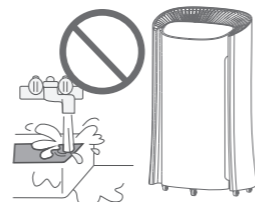
#### Do not blow in any combustible or fired cigarette into the unit.

It may cause fire



#### Do not use in the watery or high temperature room such as the bathroom etc.

Otherwise it may cause creepage, electric shocking or fire.



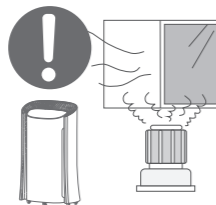
#### Keep away from alcohol, organic impregnant or insecticide

It may cause cracking, short circuit, electric shocking, hurt or fire



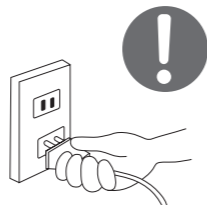
#### Please ventilate timely when used with fire in the room

Otherwise it may cause poisoning of Co, as the machine is not a ventilator



#### Please hold the plug instead of the cord when unplugging the power.

Otherwise it may cause short circuit, breaking of the cord, electric shocking or fire.



#### Please remove the plug from the socket if any conditions as below:

- If all switches do not work
- If the power cord or plug hot singularly
- If any peculiar smell, exceptional noise or vibration
- Any other abnormality or failure

If the power cord is damaged, please send it to the retailer or service center or technician for repairing. Do not change or repair it by yourself.

## PRODUCT PERFORMANCE AND TECHNICAL FEATURES

### Product performance

- **Washable Pre-Filter:** Effectively remove cotton flocculation, hair, mosquito or other slightly bigger particulate, improve HEPA lifetime.
- **HEPA:** Effectively remove PM2.5 by using new generation of composite material.
- **Activated carbon:** adopting the porous coconut made by modern biological carbonization synthesis technology, adsorption capacity is bigger, and can effectively remove smoke, formaldehyde.
- **Photo catalyst:** using titanium dioxide (TiO<sub>2</sub>) material, its oxidation function can damage the filter captured the cell membrane of bacteria, inhibit virus activity.
- **UV lamp:** air is the main path leading to the spread of the virus, using UV air sterilization technology, the environment of natural bacteria killing rate can reach more than 96%.
- **Anion:** negative ion is praised as Air Vitamin. People live in the high negative ionic environment, can promote human new and old superseded, improve immunity.

### Technical features

- **Air quality intelligent detection:** built-in PM2.5 particle sensor .
- **IMD control panel:** using a new generation of IMD technology, more convenient control.
- **Digital display:** PM2.5, temperature, humidity, timer indicator, more intuitive and easy to understand.
- **Automatic alarm:** set filter, UV lamp replacement warning indicator.
- **ERP design:** standby power ≤ 0.5W.
- **Japan DC motor:** more quiet and more environmental.

Diagram of the outlook

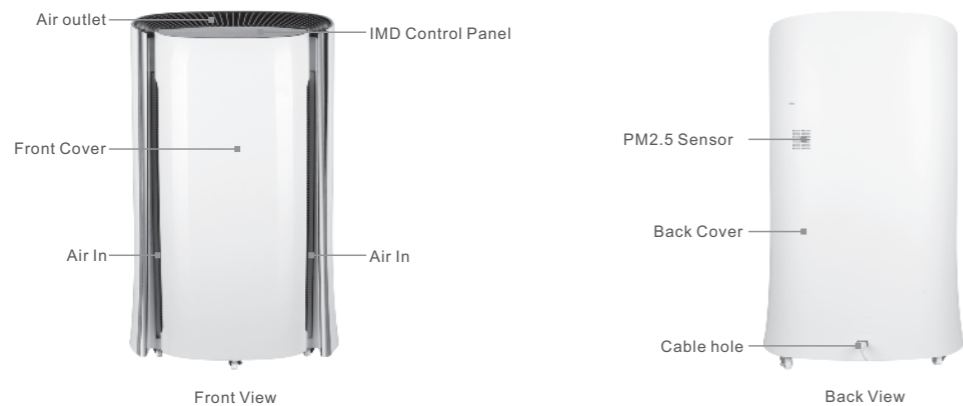
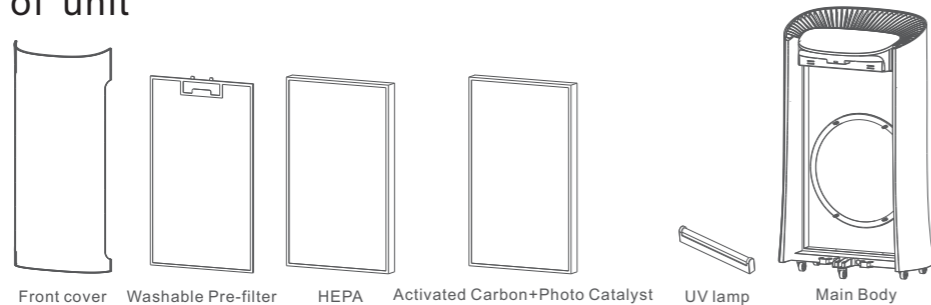
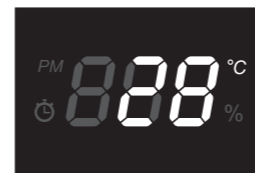


Diagram of unit

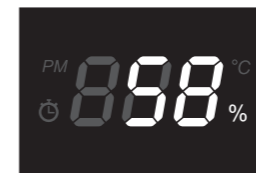


Operating parts

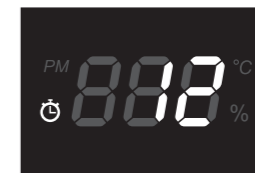
- Digital indicator



Temperature



Humidity

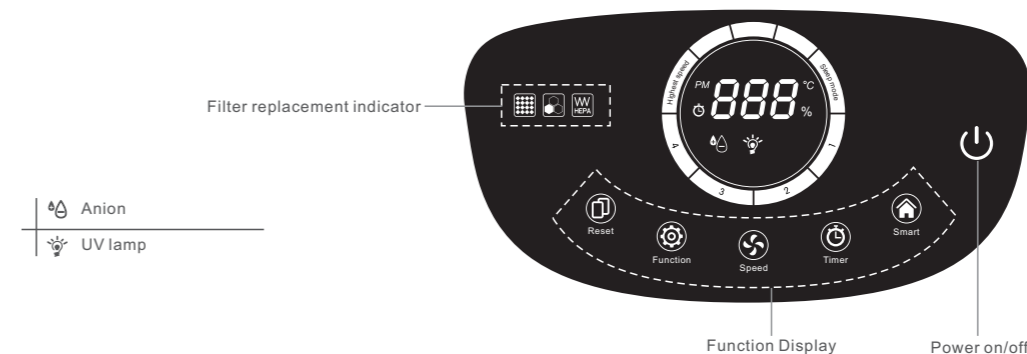


Timer



PM2.5

- Screen diagram



### How to touch the control panel?

- Please touch the button with whole finger as following:



Wrong



Correct

### Disassembling front cover

- **Disassembling diagram**

Hold on the front cover with two hands, and pull it out.



Disassembling diagram

- **Installation diagram**

Insert two pins of bottom side into two slot of main body.



Installation diagram

### Installation of the filters

- Take off front cover
- Take out the Pre-filter, HEPA, activated carbon + photo catalyst, tear off filters transparent bags and put them back into device accordingly.



1. Take off the front cover



2. Install activated carbon + photo catalyst



3. Install HEPA



4. Install pre-filter



5. Install front cover

### Power supply

- Please don't connect this machine with wrong voltage of power supply, inserting the plug firmly into the power socket.



### Placement

- Please keep the machine air inlet and outlet 30cm or more away from the wall and home furniture.
- Do not use the machine in front of heat source outlet.

## Power setting

- To press the "power" icon on the product operating panel, machine is entered the initial working status.  
The diagram as following:



## Function setting

- Press the "function" icon, Anion, and UV lamp can be chosen individually or multiply or close these two functions.  
The diagram as following:



## Timer setting

- Long press "Timer" icon, the displayed digit is flashing, then the timer mode is started.
- Press "Timer" icon continuously, the time can be chosen from 0 to 12 hours, the device memory function will be started after waiting for 5 seconds.  
The diagram as following:



**Remark 1:** Press time button on operation panel to preview how long time setting.

**Remark 2:** Hold on time button if you want to cancel time setting.

**Remark 3:** When time setting is finished/power off, machine turn to normal working mode.

## Fan speed setting

- Fan Speed "1, 2, 3, 4 and Highest speed" can be selected after pressing the "speed" icon on the operation panel.
- Sleep mode: pressing "speed" icon and hold on for 3 seconds, the sleep mode will be on, if pressing any icons, the sleep mode will be cancelled.

**Remark 1:** If machine is set as smart mode, the "speed" icon can't be adjusted.

**Remark 2:** Sleep mode is night mode, fan speed and noise are very low, all indicators are not lighted.



P1: speed adjustment diagram



P2: Sleep mode diagram

## Smart setting

- PM2.5 Sensor built-in.
- Air quality indicator will be lighted after pressing the "Smart" icon on the product operating panel , the machine will check the air quality and control its working status automatically.
- PM2.5 sensor: it's to check the dust or particles and display it by data. The diagram as following:



Speed	Air quality indicator color	PM2.5
Level 1	Green light	≤ 35ug/m <sup>3</sup>
Level 3	Orange light	36-150ug/m <sup>3</sup>
Level 5	Red light	≥ 151ug/m <sup>3</sup>

- The number of PM2.5 particles, air quality status, and machine intelligently running status as below.



Excellent (Green light)



Slight, medium pollution (Orange)



Serious pollution (Red light)

**Remarks 1:** The three smart light on the top is stand for air quality.

**Remarks 2:** when you choose "Smart" mode, the device will take 3 minutes to warm up, "function" icon can not use in this mode.

**Remarks 3:** when air humidity is above 80%, it will affect the sensitivity of sensor, the PM2.5 data is just for your reference.

## ● PM2.5 abnormal correcting :

After used the PM2.5 sensor for a long time, trace amounts of particulate will adhere to the sensor inductive head, it may cause the PM2.5 numerical display abnormal. When you find PM2.5 numerical severely deviated from the normal range, here we advise you collect it as follow steps based on the weather forecast's PM2.5 numerical in your city.

1. Open the window ventilated for 5 minutes (PM2.5 sensor will re-collection current environmental data).
2. Long press "function" icon, after heard a "click", showing it automatic switch to PM2.5 display window, then enter PM2.5 correcting mode.
3. Each time you press "function" icon, the machine's PM2.5 numerical will increase 2ug/m<sup>3</sup>, each time you press "smart" icon, PM2.5 numerical will decrease 2ug/m<sup>3</sup>.
4. When the PM2.5 numerical adjust to the PM2.5 numerical of your city's weather forecast, waiting 5 seconds, PM2.5 sensor collection finished.

## Reset setting

- If the filter icons are always flashing, it means the filters life time comes to the end, please clean or replace new filters.
- After cleaning or replacing new filters, please press "Reset" icon, then filter icons will stop flashing, the machine starts to record the filters using time.

Remark : "Reset" icon has refresh function, PM2.5 data can be refreshed after pressing the "Reset" icon on the product operating panel .



## Refresh setting

- Press "refresh" button to refresh PM2.5 value.



## Maintenance and cleaning instruction

### Maintenance and cleaning instruction



Please remove plug from the socket before cleaning and maintenance .

- Cleaning the body for this device by damp cloth, then wipe it dry.
- If machine is too dirty, neutral detergent can be used for cleaning, but please dilute the detergent before use.
- Do not clean the unit with the solvent listed on the right which may cause distortion or discolour.



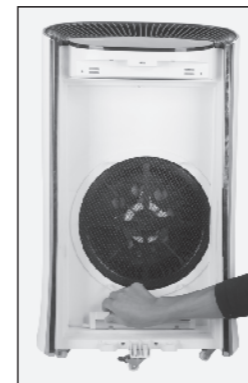
## Methods for replacing UV lamp

- Photo sensor is built-in the device, if the UV light is very weak or not lighted, the UV icon on the product operating panel will be flashing; it means UV lamp should be replaced. The diagram as following:



## Disassembly and installation for UV lamp

- Take off the front cover, and take out all filters, then UV lamp can be replaced. The diagram as following:



Hold the UV lamp and rotate it for 90 clockwise or anticlockwise, then take it out.



Hold the UV lamp and rotate it for 90 clockwise or anticlockwise, then install it well.

- If the machine can't work properly, please kindly check as below before you send it out for repair.

Abnormal occurrence	Checking methods	Solution
PM 2.5 Value keep too big or indicator stay red	• Please check if the plug is disconnected from the socket.	➔ Power plug should be plugged properly
	• Please check if the front cover is installed completely	➔ Recover the front cover correctly
Odor can not be removed.	• Is there a very strong odor in the using environment? (Notes:air should be purified continuously)	➔ Suggesting to ventilate, then start up the machine.
	• Does the using life time for activated carbon filter come to the end?	➔ Please replace new filters.
High noise	• Is the PE bag for filter removed?	➔ Please take out filters and tear off PE bag.
	• Does the using life time for HEPA come to the end?	➔ Please replace new HEPA.
Air quality indicator can not work properly	• Is the air humidity very high? • Is the machine affected by kitchen oil fume or sprays?	➔ Please move the machine to another room to test again.
Small changes for humidity or temperature data	• Is the machine using area too big?	➔ Please use this machine in applicable room.

If the problem is still existed after above inspections, please disconnect the power and send it for repair.

## Parameters of the unit

Model No.:	B-C02
Voltage Supply:	220V-240V,50Hz
Air flow volume(m <sup>3</sup> /h):	≥660m <sup>3</sup> /h
Noise level dB(A):	≤66dB(A)
Length of power cord:	≥1.4M
Product size:	460×286×760(mm)
Net weight:	9.8kg
Power rating (W):	107W
Applicable area:	70-80m <sup>2</sup>

## Filter parameters

Description	Size	Life time
Pre-filter	554×329×6(mm)	Washable
HEPA	554×329×29(mm)	About 12 months
Activated Carbon +Photo Catalyst	554×329×11(mm)	About 6 months

## UV parameters

Description	Voltage Supply	Wave length
UV lamp	220V-240V	254nm

Model	Power rating	Life time
T5	6W	8000h